

East Midlands Gateway Phase 2 (EMG2)

Document DCO 6.6A/MCO 6.6A (Part 5)

ENVIRONMENTAL STATEMENT

Technical Appendices

Appendix 6A

Transport Assessment

April 2026

06

The East Midlands Gateway Phase 2
and Highway Order 202X and The East Midlands Gateway
Rail Freight and Highway (Amendment) Order 202X

[SEGRO.COM/SLPEMG2](https://www.segro.com/slpemg2)

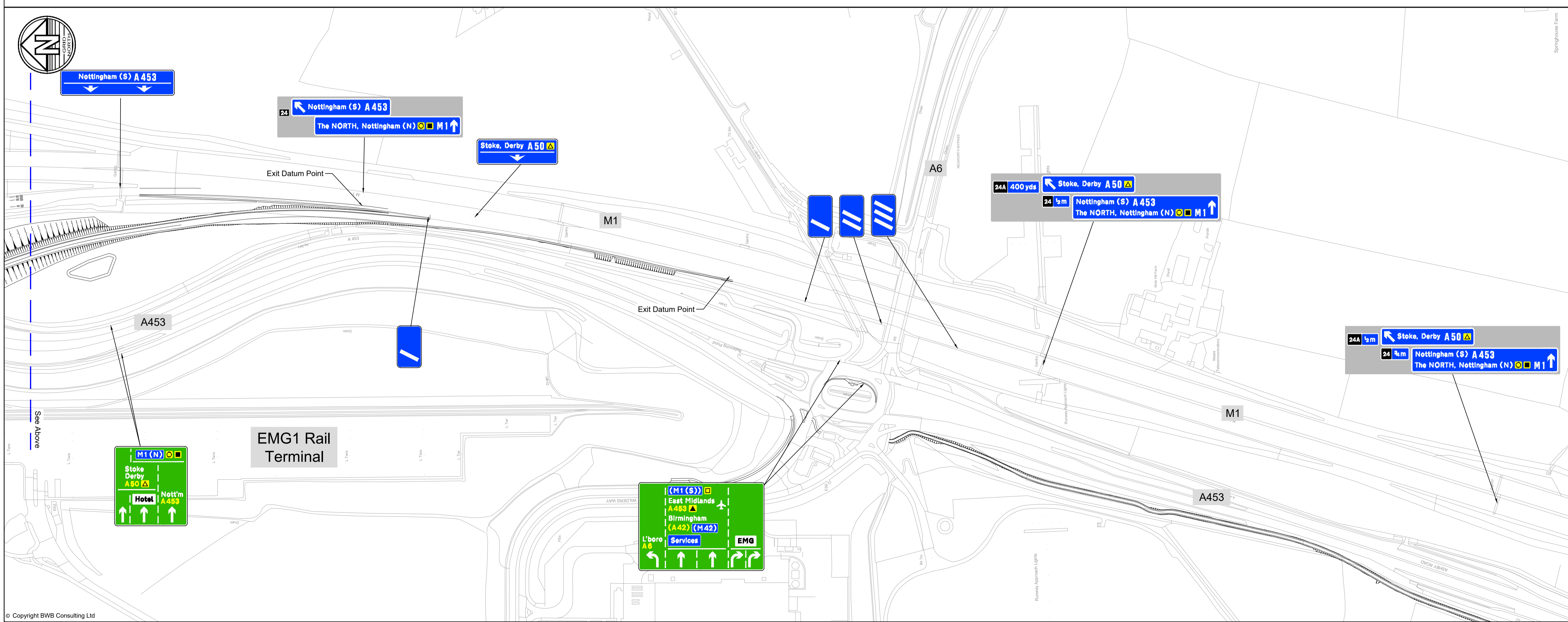
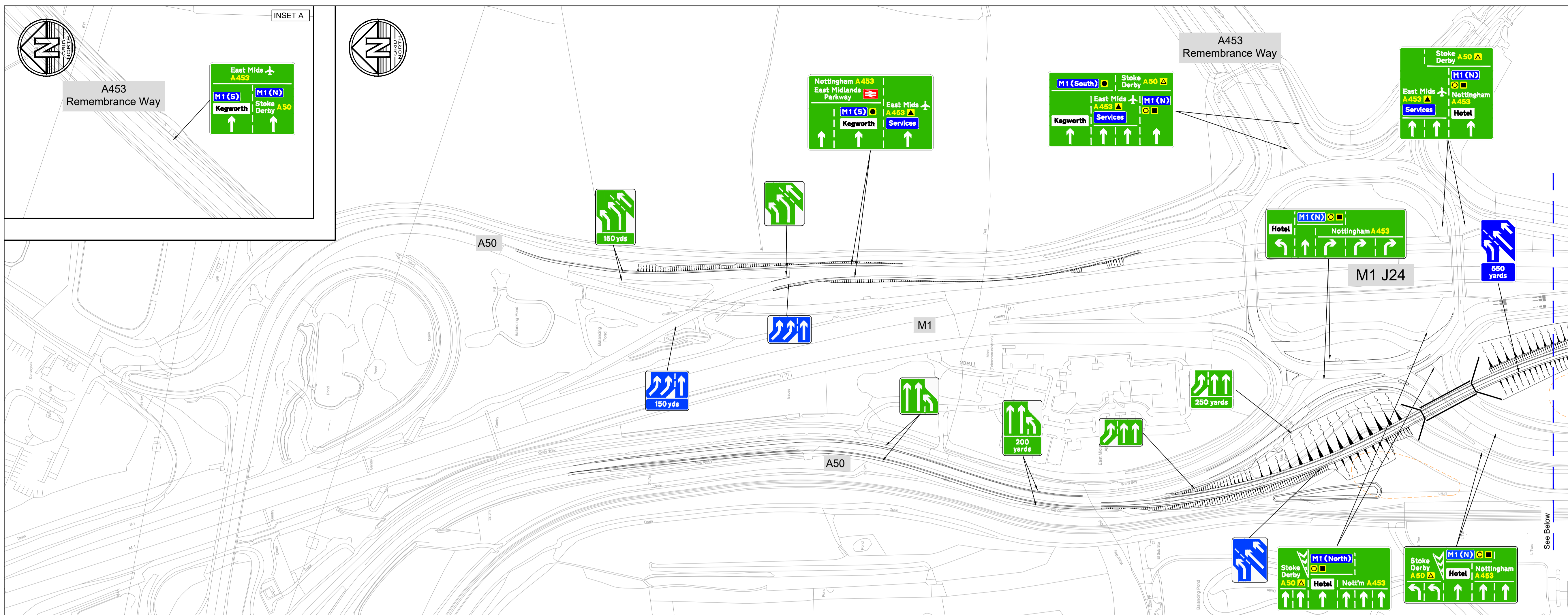
SEGRO

**The East Midlands Gateway Phase 2 and
Highway Order 202X and The East Midlands
Gateway Rail Freight and Highway (Amendment)
Order 202X**

**APPENDIX 6.6A TRANSPORT ASSESSMENT
(PART 5)
(DOCUMENT DCO 6.6A/MCO 6.6A)**

Version	Date	Status of Version
0	October 2025	Submission
1	April 2026	Deadline 1

APPENDIX 28: Directional Signage Strategy



- Notes**
- Do not scale this drawing. All dimensions must be checked/ verified on site. If in doubt ask.
 - This drawing is to be read in conjunction with all relevant architects, engineers and specialists drawings and specifications.
 - All dimensions in metres unless noted otherwise. All levels in metres unless noted otherwise.
 - Any discrepancies noted on site are to be reported to the engineer immediately.
 - The purpose of this drawing is to show the strategy for directional signage. It is subject to detailed design.
 - Existing retained directional signage are not shown on this drawing.

P03	05.02.26	Strategy updated following RSA1	DF	zz
P02	25.06.25	Scheme updated	SRH	SRH
P01	26.03.25	Preliminary Issue	JFP	SRH
Rev	Date	Details of issue / revision	Drw	Rev

Issues & Revisions

BWB
A CAF GROUP COMPANY

Birmingham | 0121 233 3322
 Leeds | 0113 233 8000
 London | 020 7407 3879
 Manchester | 0161 233 4260
 Nottingham | 0115 924 1100
www.bwbconsulting.com



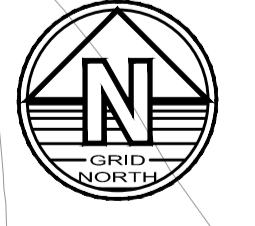
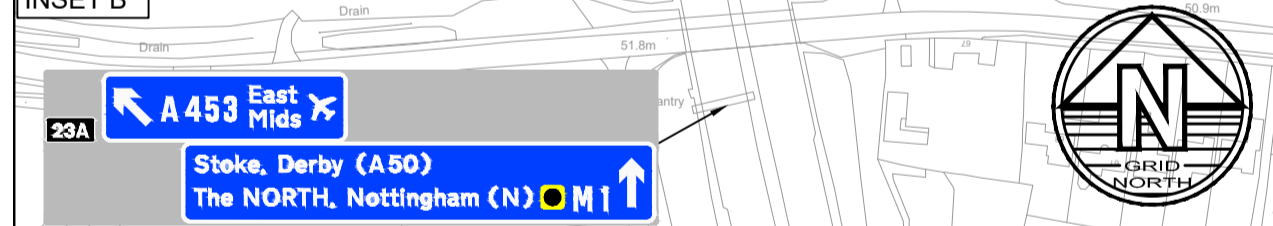
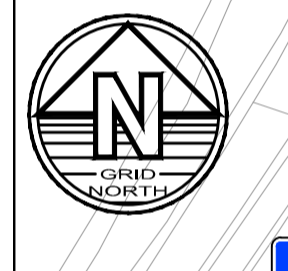
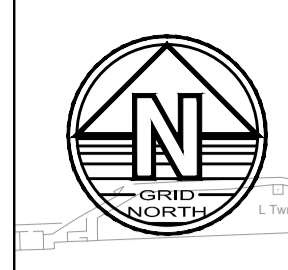
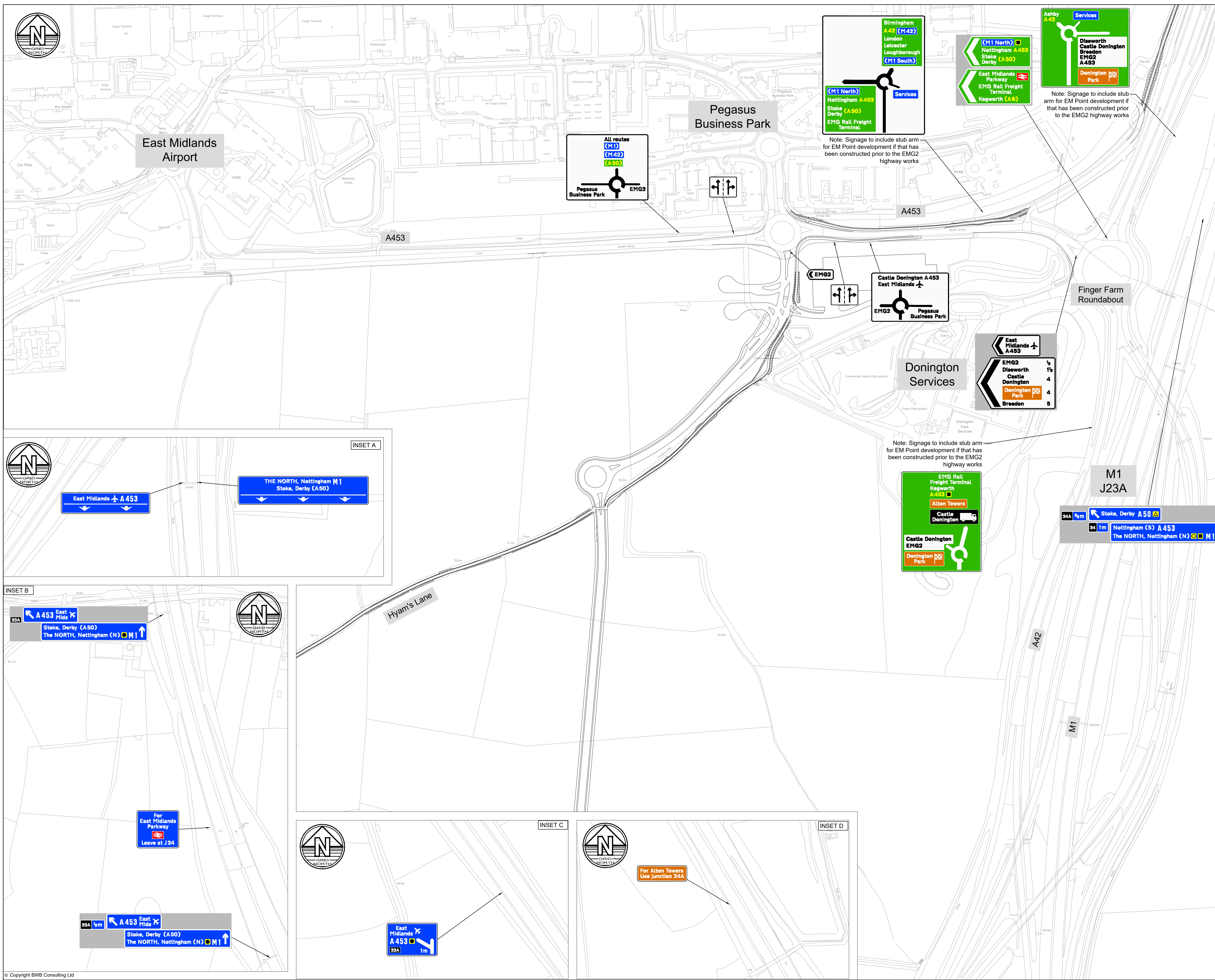
Project Title
EAST MIDLANDS GATEWAY 2 (EMG2)

Drawing Title
DIRECTIONAL SIGN STRATEGY SHEET 1 OF 2

Drawn:	J. Palmer	Reviewed:	S. Hilditch
BWB Ref:	220500	Date:	26.03.25
Scale:	@A1: 1:2500		

FOR INFORMATION

Project - Originator - Zone - Level - Type - Role - Number	Status	Rev
EMG2-BWB-HSN-ZZ-DR-CH-1200	S2	P03



Notes

1. Do not scale this drawing. All dimensions must be checked/ verified on site. If in doubt ask.
2. This drawing is to be read in conjunction with all relevant architects, engineers and specialist drawings and specifications.
3. All dimensions in metres unless noted otherwise. All levels in metres unless noted otherwise.
4. Any discrepancies noted on site are to be reported to the engineer immediately.
5. The purpose of this drawing is to show the strategy for directional signage. It is subject to detailed design.
6. Existing retained directional signage are not shown on this drawing.

P03	10.02.26	Strategy updated following RSA1	DF	SRH
P02	13.06.25	Background mapping update	SRH	SRH
P01	26.03.25	Preliminary Issue	JFP	SRH
Rev	Date	Details of issue / revision	Drw	Rev

Issues & Revisions

BWB
 A CAF GROUP COMPANY

Birmingham | 0121 233 3322
 Leeds | 0113 233 8000
 London | 020 7407 3879
 Manchester | 0161 233 4260
 Nottingham | 0115 924 1100
www.bwbconsulting.com



Project Title
EAST MIDLANDS GATEWAY 2 (EMG2)

Drawing Title
DIRECTIONAL SIGN STRATEGY SHEET 2 OF 2

Drawn:	J. Palmer	Reviewed:	S. Hilditch
BWB Ref:	220500	Date:	26.03.25
Scale:	@A1: 1:2500		

FOR INFORMATION

Project - Originator - Zone - Level - Type - Role - Number	Status	Rev
EMG2-BWB-HSN-ZZ-DR-CH-1201	S2	P03